

62.09

ac

LIBRARY
RECEIVED
★ SEP 28 1953 ★
U. S. Department of Agriculture

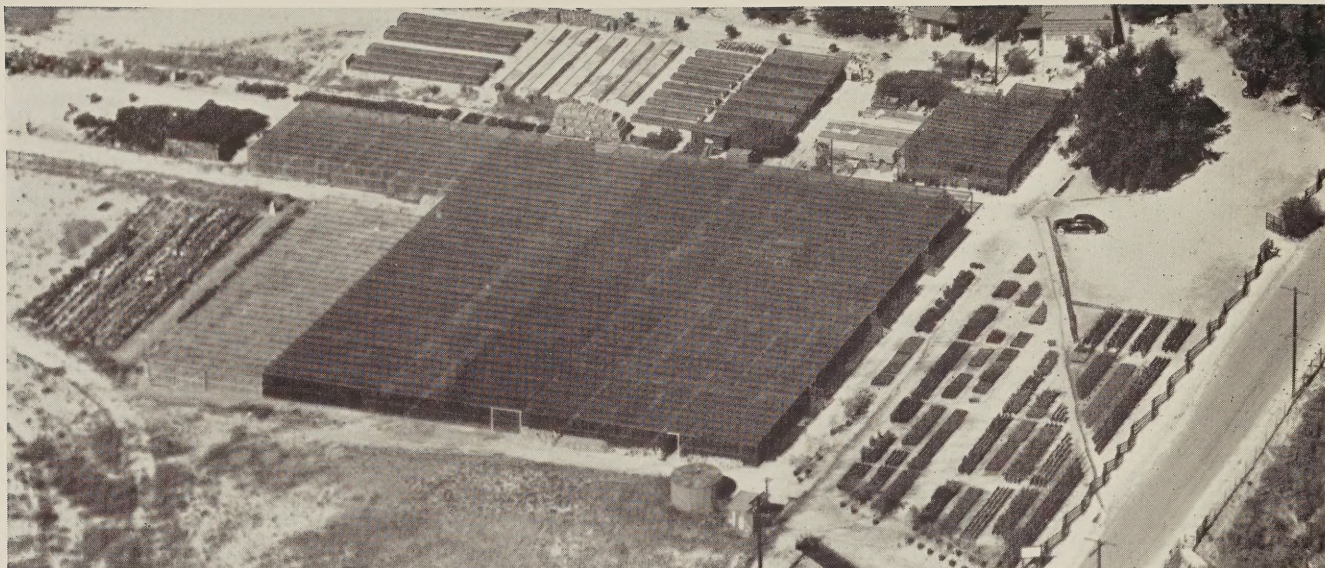


Sasanqua Camellia JEAN MAY

Nuccio's
Nurseries

CAMELLIAS FOR 1954

Altadena, Calif.



AERIAL VIEW OF NUCCIO'S NURSERIES

WELCOME VISITORS!

Most of our customers come to us through the United States mail, but we enjoy having visitors stop in to see us, and we cordially invite you to do so whenever you can. We are open daily **except Wednesday**, and business hours are from 8:00 to 5:00. During the period from June 1 through September 15 we are also closed on Sundays.

TERMS OF SALE

Please send your remittance with your order. California customers add 3% sales tax to the total. Prices in this catalog are subject to change without notice, and are all F.O.B. Altadena, California. Please specify the way you wish to have us make shipment (parcel post, express, motor freight, railroad freight or air freight). When no instructions are given we will ship via Railway Express. We make no crating charge on orders over \$20.00, but **if your order amounts to less than \$20.00, please add \$1.00 for the first plant and 25c for each additional plant ordered** in order to cover crating costs.

GUARANTEE

We guarantee all plants to be true to name, to be well grown, and properly packed for shipment. Shortages, damages or losses should be reported to the transportation agency immediately on arrival, and if you will notify us, we will give you all the assistance we can. At no time will we be responsible for more than the purchase price.

PLEASE READ BEFORE ORDERING

All of our Camellias are container grown (1-gal., 3-gal., 5-gal. and 6-gal.) and will be shipped in their containers. Handled this way Camellias can be shipped and planted every month of the year.

We propagate over 650 varieties of Camellias, many of which are too rare to be in the catalog list. Information desired on varieties not listed will be supplied on request.

We also have large, specimen plants of many varieties, and we will quote prices for these on request.

Notice to residents of the states of Alabama, Florida, Louisiana, Mississippi, North Carolina, South Carolina, Tennessee and Virginia: All shipments of Camellias into these states will be bare-rooted, re-balled in peat moss, burlapped and wrapped in waterproof paper. We are experienced in shipping bare-rooted Camellias and have found the above method so successful that we are giving the same guarantee we give our container grown Camellias. We have successfully shipped bare-rooted Camellias all months of the year, but for best results we advise shipment from mid-September through May.

SAVE MONEY

We offer generous discounts for quantity purchases. Please refer to the table of discounts on page 13.

How to Grow Fine Camellias

Where and How to Plant

Even though Camellias can and are being successfully grown in full sun, the best exposure is filtered shade (trees, lath, etc.), morning, or afternoon sun. If planting a Camellia in full sun, it should be done in the winter months in order to allow the plant to become acclimated before summer heat.

Dig a hole at least twice as deep and twice as big around as the size of the container or ball of the plant. Add $\frac{1}{3}$ peat moss or leaf mold to soil taken from hole and mix thoroughly. If soil is heavy (clay or adobe) use at least 50% peat moss or leaf mold. Fill the hole with sufficient amount of mixed soil so that after firming, the top of the plant ball will set at least one inch above the surrounding area. **NEVER PLANT TOO DEEP.** After setting plant in hole, fill with the mixed soil and pack firmly. Make a basin around the plant and give it a thorough watering to settle soil. Place about one inch of peat moss in basin for mulch.

Watering

Do not allow plants to become dry, and more important, never keep soil soggy wet. Either condition can cause buds to drop or loss of plant. Always bear in mind that a Camellia likes to be kept reasonably moist, but also requires good drainage.

Fertilizing

Camellias should be fertilized during the summer growing months, starting as early as March and not later than August. Three feedings in this period are sufficient, i.e., April, June and August. Space feedings at least 30 days apart. Any of the better known acid fertilizers may be used, preferably cottonseed meal. For amount follow directions on packages. **NEVER OVER-FERTILIZE.**

NUCCIO'S *Supreme Quality* CAMELLIAS

VARIETY	SIZES			
	12"-18"	18"-24"	24"-30"	30"-36"
ADOLPHE AUDUSSON —Large, heavy petaled semi-double, deep red.	3.00	4.00	\$7.50*	\$10.00*
ADOLPHE AUDUSSON VAR. (Special)—Heavily mottled white form of Adolphe Audusson.	4.00*	5.00*	7.50*	10.00*
ALBA PLENA —Still one of the best of the pure white formal doubles showing no stamens.	2.50	3.50	6.00	7.50
ANEMONIFLORA ALBA —The large flowers usually have 8 to 12 heavy Textured, slightly wavy, white petals surrounding a large center of irregular creamy petaloids hiding low stamens, with an occasional irregular semi-double bloom. Vigorous, upright growth.	10.00*
ANITA —Light pink, striped carmine. Medium to large, semi-double.	2.00	3.00	5.00	6.50
ANN MILLER —New. Large, semi-double to double, pale pink.	5.00*	6.50*
APPLE BLOSSOM (Salunensis)—Single pink and white. Small.	2.00	3.00
ARAJISHI (Aloha)—Salmon-red to deep crimson red. Very early bloomer. Large peony type.	2.00	3.00	5.00	6.50
ARRABELLA —Orange-red. Resembles Reticulata in form. Large, semi-double.	5.00*	6.50*	7.50*	10.00*
ASPACIA —Variegated of Emperor of Russia. Crimson spotted with white.	2.00	3.00	5.00
BEAU HARP —Very large, irregular semi-double, brilliant rose-red.	7.50*
BELLA ROMANA —Light pink, striped crimson. Medium-large, double.	2.00	3.00	5.00	6.50
BERENICE BODDY (U.S. Pat. No. 605)—Light pink with deeper pink under petals, shading to a blush center. Medium-large, semi-double.	3.50*	4.50*	6.50*	8.50*
BESSIE MORSE BELLINGRATH —White with faint blush of pink. Large, semi-double.	5.00*	7.50*	10.00*
BETTY THEISEN —A beautiful large, loose, semi-double, pale pink, shading to deeper pink in center.	5.00*	6.50*	7.50*
BLACK DRAGON —Very dark red. Large, semi-double to peony form.	4.00*	5.00*
BIG BEAUTY —White, blotched and spotted with pink. Large, semi-double to loose peony form.	4.00*	5.00*	7.50*
BLOOD OF CHINA —Deep salmon-red. Large, semi-double to loose peony form. Late bloomer.	2.00	3.00	5.00	6.50
BLUSH HIBISCUS —White with blush-pink center. Very large single to semi-double.	4.00*	5.00*	7.50*	10.00*
CALIFORNIA —Rose-red, golden stamens, with unusually large petals. Very large, semi-double.	2.50	3.50	6.00
CAMPBELL ASHLEY —Dark red. Large, semi-double to loose peony form.	4.00*	5.00*	7.50*
CATHERINE McCOWAN —New. Light pink. Sport of Eleanor McCowan.	5.00*	6.50*
CHANDLERI ELEGANS PINK (Francine)—Rose-pink. Large anemone form.	2.50	3.50	6.00	7.50
CHANDLERI ELEGANS VAR. —Rose-pink, mottled with white.	2.50	3.50	6.00	7.50
CHO-CHO-SAN —New. Pale pink, golden stamens. Large, semi-double.	5.00*	6.50*

* An asterisk after the prices denotes grafted plants

VARIETY

SIZES

12"-18"	18"-24"	24"-30"	30"-36"
4.00*	5.00*	7.50*	10.00*
5.00*
5.00*
2.50	3.50	6.00	7.50
2.50	3.50	6.00	7.50
4.00*	5.00*	7.50*	10.00*
4.00*	5.00*	7.50*
4.00*	5.00*	7.50*
1.50	2.50	4.50	6.00
5.00*	6.50*	7.50*
2.00	3.00	5.00	6.50
2.00	3.00	5.00	6.50
4.00*
5.00*
2.50	3.50	6.00	7.50
7.50*
2.50	3.50	7.50
5.00*	6.50*	10.00*

CHO-NO-HANAGATA—Pale pink. Large, semi-double to peony form.

CHOYO-NO-NISHIKI—Large, semi-double variegated. Vividly striped rose-red on pink background. Early bloomer.

CLARA GREEN—A very lovely, large anemone form. Brilliant rose-pink.

CLEOPATRA—Pink, marbled with white. Large, full peony form.

C. M. HOVEY (Col. Firey)—Brilliant, deep red. Large, full double, imbricated.

C. M. WILSON—New. Pale pink sport of Chandleri Elegans. Outstanding.

CONFLAGRATION—Fire-red. Large, semi-double.

COLLETTII (Collettii Maculata)—Brilliant dark red, blotched with white. Medium, peony form.

COVINA—Rose-red. Medium, semi-double. Excellent landscape variety.

CRUSADER—Deep red. Very large semi-peony form to rose form double.

DAIKAGURA RED—Bright rose-pink. Early. Very large peony form.

DAIKAGURA VAR.—Bright rose-pink, splotted with white. Early. Very large peony form.

DAINTY—Blush-white, striped with pink. Heavily fringed petals. Semi-double. Sport of Tricolor Sieboldi.

DAITERIN—Light rose-pink. Very large single with mass of blush-white petaloids in center.

DEBUTANTE—Soft pink. Large, full peony form. Early.

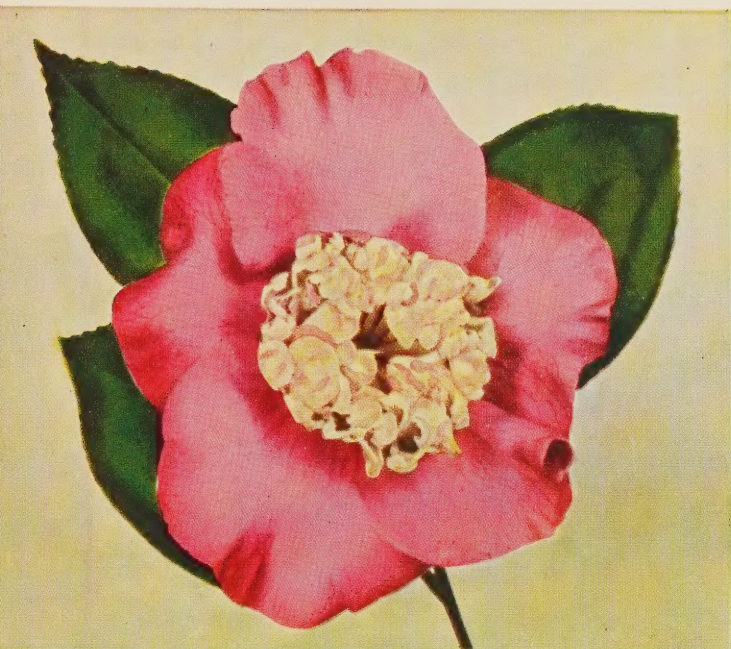
DESSA THOMPSON—New. Medium to large, white, full peony form, extremely early. Compact, upright growth.

DONCKELARI (Southern)—Red, sometimes marbled white. Very large, semi-double with golden stamens. Slow, bushy growth.

DONCKELARI—Same as Donckelari (Southern) with the exception that our parent plant blooms heavily marbled white.

C. M. WILSON

GOVERNOR EARL WARREN



DAITERIN



VILLE DE NANTES VAR.

VARIETY

DOROTHY MAC—This Chandleri seedling is identical to its parent but pure white in color and not as large a blossom.

DR. JOHN D. BELL—Dark red, heavily variegated white form of Beau Harp.

DR. SHEPHERD (Te Deum)—Dark red. Very large, from semi-double to full peony to formal double.

DR. TINSLEY—New. Large, flesh pink, semi-double to peony. Outstanding.

DUNCAN BELL—Brilliant red. Very large anemone form.

EDWIN FOLK—New. Bright red. Very large, loose semi-double.

ELEANOR HAGOOD—Pale pink. Medium, formal, very double.

ELEANOR HAGOOD VAR.—Pale pink, mottled with white. Medium, formal, very double.

ELEANOR McCOWAN—White, striped with red and pink. Large, semi-double to peony form.

ELEANOR OF FAIROAKS—Ruby-red, marbled with white. Large, semi-double to peony form. Variegated Vedrine.

ELENA NOBILE—Bright flame-red. Medium, formal double, showing stamens when fully opened.

ELIZABETH BOARDMAN—White. Very large semi-double with large twisted petals.

ELIZABETH FLEMING VAR.—Clear pink, mottled with white. Very large, semi-double.

ELIZABETH LE BEY—This outstanding new camellia is a must in every collection. The rich pink blossoms are very large, hemispherical, semi-double to loose peony form. Vigorous, pendulous growth.

EMMA—Large, light pink. Rose form to peony form. Very lovely.

SIZES

12"-18"	18"-24"	24"-30"	30"-36"
2.50	3.50	6.00
7.50*
4.00*	5.00*	7.50*	10.00*
7.50*
2.50	3.50	6.00	7.50
5.00*	6.50*
4.00*	5.00*	7.50*	10.00*
4.00*
2.50	3.50
2.50	3.50	6.50*	7.50*
2.00	3.00	5.00	6.50
2.50	3.50	6.00	7.50*
5.00*
10.00*
5.00*

VARIETY	SIZES			
	12"-18"	18"-24"	24"-30"	30"-36"
EMMETT PFINGSTL —Beautiful red and white variegated form of Joseph Pfingstl. An excellent camellia.	10.00*
EMPEROR OF RUSSIA —Scarlet. Large, double to peony form.	2.00	3.00	5.00	6.50
EUGENE LIZZIE (Lady Jane Gray)—Rose-pink, marbled with white. Large, semi-double to peony form.	4.00*	5.00*	7.50*
F. G. No. 2 —Brilliant red heavily blotched with white. Large semi-double. Slow, compact growth. Believed to be the same as Iwane Shibori.	5.00*	7.50*	10.00*
FIMBRIATA —Resembles Alba Plena with the exception of the petals which are beautifully fringed.	2.50	3.50	6.00	7.50
FINLANDIA —White. Large, semi-double with fluted petals.	2.00	3.00	5.00	6.50
FINLANDIA VAR. —White, streaked and speckled red form of Finlandia.	2.00	3.00	5.00	6.50
FIREBRAND VAR. —Scarlet-red, heavily spotted with white. Large, semi-double.	4.00*	5.00*	7.50*
FIRST FLUSH (Hybrid Salunensis x Japonica)—Small, single, delicate pink. Profuse bloomer. Valuable as landscape material.	5.00*	6.50*	7.50*	10.00*
FLAME —Flame-red. Very large, semi-double. Large petals.	2.50	3.50	6.00
FLAME VAR. —Flame-red, mottled with white. Variegated form of Flame.	4.00*	5.00*	7.50*
FLAMINGO —Beautiful, large, light pink. Single to semi-double.	5.00*	6.50*
FLOWERWOOD (U.S. Pat. No. 1074)—This outstanding sport of Mathotiana is being offered for the first time. Flower form and color identical to Mathotiana but all petals are sharply fimbriated. Outstanding.	7.50*
FRANK GIBSON —This outstanding new camellia, with its striking color and unusual form, has caused much comment wherever shown. A large, anemone form, consisting of a single row of white petals and a center of numerous golden petaloids and stamens.	7.50*
FRED SANDER —Crimson-red. Medium size, semi-double with curled and heavily fimbriated petals.	4.00*	5.00*	7.50*	10.00*
FRENCH IMPERATOR —Very large full peony form. Extremely dark red.	4.00*
FRIZZLE WHITE —White. Very large, semi-double, with wavy petals intermixed with stamens.	2.50	3.50	6.00	7.50
GEN. DWIGHT EISENHOWER —Deep red. Large peony to anemone form.	2.50	3.50	6.00	7.50
GEN. GEO. PATTON —Bright pink. Large, formal double showing stamens.	2.50	3.50	6.00	7.50
GIGANTEA (Emp. Wilhelm)—Brilliant red, marbled with white. Very large, semi-double to peony form.	4.00*	5.00*	7.50*	10.00*
GIGANTEA ALBA —Very large, pure white, single. Prominent stamens.	4.00*
GLEN 40 —Deep orange-red. Large, full formal double. Slow, compact.	4.00*	5.00*	7.50*	10.00*
GLEN 40 VAR. —Deep orange-red, mottled with white.	4.00*
GOSHOGURUMA —Deep red, occasionally spotted with white. Large, semi-double to peony form.	3.00	4.00	7.50
GOV. EARL WARREN —Deep, rich pink. Very large, semi-double with some of the center petals having an irregular twist.	3.00	4.00	7.50	10.00
HAKU RAKUTEN —White. Large, semi-double to peony form.	4.00*	5.00*
HERME (Jordan's Pride)—Pink with white border, streaked rose-pink. Large, semi-double.	1.50	2.50	5.00	6.00

VARIETY	SIZES			
	12"-18"	18"-24"	24"-30"	30"-36"
HIGH HAT —Pale pink sport of Daikagura.	4.00*	5.00*	7.50*	10.00*
HISHI-KARAITO —Small, bell-shaped, semi-double. Delicate pink.	5.00*
IMURA —White. Very large, semi-double.	2.00	3.00	5.00	6.00
JAMES ALLAN —Fire-red. Very large, semi-double.	4.00*	5.00*	7.50*
JAMES ALLAN VAR. —Fire-red, mottled with white.	4.00*	5.00*	7.50*
J. C. WILLIAMS (Hybrid Salunensis x Japonica)—An outstanding new hybrid. Medium sized, light pink, profuse bloomer. Extremely long blooming season.	7.50*
JENNY JONES —Blush white. Large, semi-double.	4.00*	5.00*	7.50*	10.00*
JESSIE KATZ (Pat. Pending)—An outstanding new variety with large, wavy petals. Semi-double, watermelon pink. We are the exclusive West Coast propagators of this fine new camellia.	7.50*	10.00*	12.50*
J. J. PRINGLE SMITH VAR. —Dark red, heavily marbled with white. Very large, semi-double.	2.50	3.50	7.50*
JOSEPH PFINGSTL (Pat. No. 927)—A very large dark red, varying in form from semi-double to full formal. Extremely hardy and vigorous growth with long blooming season, October to April.	10.00*
JOSHUA A. YOUTZ (White Daikagura)—This outstanding camellia was introduced by our nursery in 1950. Its blossoms, which are pure white, full peony form to formal double, are larger than its parent, the Daikagura. Its foliage, growing habit and early blooms are like its parent, making this variety a truly outstanding camellia.	4.00*	5.00*	7.50*	10.00*
KATHERINE NUCCIO (N #104)—This seedling first bloomed in 1942 and has proven itself well worthy of propagation because of its long season of bloom (starting as early as December and blooming through March), its lasting qualities as a cut flower, and its color. A 3 to 3½ inch double formal, rose form, consisting of 60-65 large petals. Brilliant rose-red, with edges of petals cupped inward. Foliage, dark green, medium, slightly twisted. Compact growth.	4.00*	5.00*	7.50*	10.00*
KENNY —Deep rose-pink, blotched white. Large, semi-double to peony form.	4.00*
KIMBERLEY —Carmine with red stamens. Medium, single. Profuse bloomer.	2.50	3.50	6.00
KING LEAR —Cherry-red, marbled with white. Variegated form of Finlandia. Vigorous, compact growth.	2.50	3.50	7.50*	10.00*
KISHU TSUKASA (Capt. John Sutter)—Deep pink, blotched with white. Large, formal double.	2.50	3.50	6.00
KUMASAKA —Rose-pink. Large, full double. Upright and compact growth.	2.00	3.00	5.00	6.50
LADY CHARLOTTE —Clear light pink with lighter pink veins. Large, semi-double. Very compact growth.	2.50	3.50	6.00	7.50
LADY CLARE —Rose-pink. Very large, semi-double. Prominent golden stamens.	2.00	3.00	5.00	6.50
LADY LUCILLE —Very large, full double to peony. Creamy white.	5.00*	6.50*	7.50*
LADY MARY CROMARTIE —Deep rose-pink. Large petaled, semi-double. Upright, compact growth.	2.50	3.50	7.50*
LADY SADIE —White. Large, semi-double with fluted petals that intermix with golden stamens.	4.00*	5.00*	7.50



MATHOTIANA (Julia Drayton)



DEBUTANTE

NEW CAMELLIAS

Not only do we maintain a steady breeding program of our own, which has resulted in the introduction of such varieties as KATHERINE NUCCIO, MASQUERADE, PRIMAVERA and WARRIOR, but we also carry on a very extensive trial of new varieties from other breeders. Out of the hundreds we have given critical examination, both new and very recent, we are adding 37 varieties to our catalog this year. This constant program assures you of the opportunity to acquire the newest and best camellias at Nuccio's.



CHANDLERI ELEGANS VAR.

QUANTITY DISCOUNTS

It is easier for us to pack and ship several plants at one time than to make single plant shipments. We are glad to pass such savings in time and money on to you through quantity discount prices. Please refer to the schedule on page 13.

VARIETY

	SIZES			
	12"-18"	18"-24"	24"-30"	30"-36"
LALLAROOK (Laurel Leaf)—Pink, marbled with white. Large, full double imbricated. Excellent cut flower.	2.50	3.50	6.00	7.50
LAWRENCE WALKER —Brilliant red. Very large, loose peony form.	5.00*	6.50*	7.50*
LENA JACKSON —New. Large, blush pink. Formal to semi-double.	6.00*	7.50*
LETITIA SCHRADER —Dark, bright red. Very large peony form.	5.00*	6.50*
LOTUS —White. Very large semi-double, showing prominent stamens.	2.50	3.50	6.00	7.50
LOUISE McCLAY VAR. —Deep pink blotched with white.	5.00*	6.50*	7.50*
MADGE MILLER (Chandleri Alba)—White. Large semi-double to anemone form.	2.50	3.50	6.00
MAGNOLIAFLORA —Still one of the best of the pale pink semi-doubles. Its very compact, upright growth makes it a handsome shrub.	4.00*	5.00*	7.50*
MAGNOLIA QUEEN —White with an occasional rose-red blotch and a few light pink stripes. Large, irregular semi-double with flat blossoms.	4.00*	5.00*	7.50*	10.00*
MARGARETE HERTRICK —White. Medium-large, formal double, consisting of numerous petals. Good cut flower.	3.00	4.00	7.50	10.00

ORDER BLANK

NUCCIO'S NURSERIES

3555 CHANEY TRAIL, ALTADENA, CALIFORNIA

Date.....

Ship to.....

Street or R.F.D.....

City.....

State.....

SHIPMENT: Please indicate here the way you want us to ship your plants. We will ship via Railway Express unless otherwise instructed. Ship via.....

Quantity

VARIETY

SIZE

PRICE

[illegible]

[illegible]



C. M. HOVEY (Colonel Firey)



VARIETY

FINLANDIA VAR.

	SIZES			
	12"-18"	18"-24"	24"-30"	30"-36"
MARGARET HIGDON —Rose-red, occasionally showing white margined petals. Large, semi-double.	2.50	3.50	6.00
MARGARET WALKER —A beautiful variegated camellia. White, striped with pink. Large, semi-double to rose form double.	4.00*
MARJORIE MAGNIFICENT —Pale pink, semi-double to peony form.	6.00*	7.50*	10.00*
MARTHA BRICE —Light pink. Large, semi-double to loose peony form.	3.00	4.00	7.50*	10.00*
MARY CHARLOTTE —Pale pink. Medium to large anemone form.	4.00*	5.00*	7.50*	10.00*
MASTERPIECE —This new seedling, developed by Mr. Harvey Short, has proven to be a real "Masterpiece". Its 4½ to 5 inch pure white, rose form blossoms are deep petaled, cup shaped and 3 inches deep. Foliage unusually large with open, vigorous growth, makes this camellia a very handsome shrub as well as a beautiful flower. Blooming season early—mid-season.	10.00*	15.00*
MASQUERADE (N #404) —This new seedling first bloomed in our nurseries in 1948. Last season it won blue ribbons wherever entered in seedling competition. (Frank Williams Award Winner 1952.) A very large, semi-double to loose anemone form. White with an occasional fuchsia pink or rose pink marking. Foliage, long, dark green with habit of growth spreading yet very compact.	10.00*
MATHOTIANA (Julia Drayton)—Crimson red. Very large, full double imbricated showing stamens when fully opened.	2.50	3.50	6.00	7.50
MAX GOODLEY —New. Very large, pale pink, irregular semi-double. Vigorous, open, upright growth.	5.00*	6.50*
MEREDITH LAKE —Pale lavender-pink. Medium, semi-double.	2.00	3.00	5.00	6.50
MIYA (Edith Nichols)—Pale pink. Medium to large, irregular semi-double.	4.00*	5.00*	7.50*	10.00*

VARIETY	SIZES			
	12"-18"	18"-24"	24"-30"	30"-36"
MME. HAHN —Bright pink. Large, semi-double to peony form.	3.00	4.00	7.50	10.00
MME. HOVEY —Pink, fading to a lighter shade of pink at center of blossom. Medium to large, formal double.	2.00	3.00	5.00	6.50
MOLLIE MOORE DAVIS —A very beautiful, large, deep rose-pink sport of Big Beauty. Outstanding.	5.00*
MONTÉ CARLO —Beautiful light pink sport of Finlandia. Outstanding.	7.50*
MORNING GLOW —White. Large, formal double imbricated.	5.00*	6.50*	7.50*	10.00*
MT. SHASTA —White. Large, full peony form. Upright, compact growth.	2.50	3.50	6.00	7.50
MRS. BALDWIN WOOD —White with vivid pink stripe on one or more petals. Large, irregular semi-double to rose form.	4.00*	5.00*	7.50*
MRS. BERTHA HARMS —A very large semi-double. Ivory white with blush pink cast.	5.00*
MRS. CHARLES COBB —Dark, coppery red. Large, semi-double to loose peony form.	2.50	3.50	6.00	7.50
MRS. CHAS. SIMMONS —Creamy white. Large, semi-double to loose peony form.	2.50	3.50	6.00
MRS. CLARK —A very beautiful light pink to white, large peony.	7.50*
MRS. FREEMAN WEISS —Pink, occasionally mottled with white. Large, semi-double with wavy petals.	4.00*	5.00*	7.50*
MRS. HOWARD ASPER —Light pink. Very large cup shaped, semi-double.	4.00*	5.00*	7.50*	10.00*
MRS. MARIE KEATING —Light pink. Medium-large, semi-double to peony form.	2.00	3.00	5.00	6.50
MRS. NELLIE EASTMAN —New. Flesh pink, speckled and striped with deep rose. Medium-large, full peony form. Very beautiful.	5.00*	6.50*
MRS. SHEPHERDSON —A large white striped with pink. Anemone form.	5.00*
MRS. TINGLEY —Light silvery-pink. Medium to large, formal double imbricated.	4.00*	5.00*	7.50*	10.00*
MY DARLING —Beautiful, small, soft pink. Single. Resembles a poppy.	4.00*
NAGASAKI —Rose-pink marbled with white. Very large, semi-double.	2.00	3.00	5.00	6.50
NINA AVERY —New. Pale pink. Medium to large; semi-double to peony form.	7.50*
OKI-NO-NAMI —Vivid orange-red. Large, semi-double. Very showy.	2.50	3.50	6.00
ONJI —Deep pink marbled with white. Very large semi-double. Variegated form of Lady Clare.	4.00*	5.00*
PAEONIAEFLORE —Creamy-white with a few rose-red stripes and speckles. Very large, loose peony form.	2.00	3.00	5.00	6.50
PAULETTE GODDARD —Red. Very large, semi-double to loose peony form.	4.00*	5.00*	7.50*	10.00*
PAX —White. Large, flat formal double. A favorite formal white.	2.50	3.50	6.00	7.50

VARIETY	SIZES			
	12"-18"	18"-24"	24"-30"	30"-36"
PEARL MAXWELL —A beautiful, large formal double. Soft pink. A glorified Pink Perfection.	6.00*	7.50*	10.00*
PINK BALL —Soft pink. Medium-large, full peony form. Heavy bloomer.	2.00	3.00	5.00	6.50
PINK BLEICHROEDER (Anne Galli)—Light, clear pink. Medium, formal double. Sport of Bleichroeder.	2.00	3.00	5.00	6.50
PINK DUCHESS OF SUTHERLAND —Clear pink sport of Duchess of Sutherland.	4.00*	5.00*	7.50*
PINK PERFECTION —Shell pink. Medium, formal double.	1.50	2.50	5.00	6.00
PINK SHADOWS —Another outstanding new camellia developed by Mr. Harvey Short. A beautiful, large, semi-double with fringed petals. Deep salmon pink with shadows of deeper pink. First release.	8.50*
PINK STAR —Rose-pink. Large, irregular semi-double.	2.00	3.00	5.00
POPE PIUS IX —Rich orange-red. Large, formal double imbricated.	2.50	3.50	6.00	7.50
PRIDE OF DESCANSO —White. Very large, semi-double to loose peony form.	4.00*	5.00*	7.50*	10.00*
PRIMAVERA (N #105)—A 3½-4 inch full double formal, with a high center, consisting of 55-60 petals. Pure white. Some blossoms show a small petaloid center when fully opened. This seedling first bloomed in 1943, starting its season in February and continuing through April. It is one of the few late blooming varieties that produces good blossoms in the late season. A profuse bloomer with dark green, medium size foliage.	4.00*	5.00*	7.50*	10.00*
PRINCE FREDERICK WILLIAM —Large, light pink, formal double of outstanding beauty. Australian import.	7.50*
PROF. C. S. SARGENT —Dark-red. Medium, full peony form.	2.00	3.00	5.00	6.00
PURITY —White. Medium-large, formal double showing stamens when fully opened.	1.50	2.50	5.00	6.00
QUEEN BESSIE —Blush pink. Large, semi-double with wavy petals.	2.00	3.00	5.00
RETICULATA (Capt. Rawes)—Brilliant pink. Very large, wavy and fluted petals, semi-double.	5.00*	6.50*	7.50*
REV. JOHN BENNETT —Salmon-pink. Very large, semi-double.	2.50	3.50	6.00	7.50
RISING SUN —Vivid crimson with red stamens tipped with yellow anthers. Medium-large, single.	4.00*
R. L. WHEELER (U. S. Pat. #1137)—A great new camellia that has won more awards than any other. A very large, semi-double to full peony; rose-red with extremely large foliage.	10.00*
ROOSEVELT BLUES —Purplish-red. Large, semi-double to peony form.	3.50*
ROOSEVELT BLUES VAR. —Purplish-red blotched with white.	3.50*
ROSEA PLENA —Rose-pink with dark veins. Large, rose form double.	4.00*	5.00*	7.50*	10.00*
ROSEA SUPERBA —Rose-pink. Very large, rose form double.	2.50	3.50	6.00
ROSE GLORY —Deep pink. Large, irregular semi-double.	2.00	3.00

VARIETY

SIZES

12"-18" 18"-24" 24"-30" 30"-36"

SARA-SA—Flesh pink, spotted and striped with darker pink. Large, semi-double.

2.50 3.50 6.00 7.50

SCENTED TREASURE—This fine new seedling, developed by Mr. Harvey Short, is a 3 to 4 inch full double, peony form. Deep cherry-red blossoms that have the spicy fragrance of English Pinks. Profuse and extremely early season of bloom.

7.50*

SEN. DUNCAN U. FLETCHER—Rose-red. Large, irregular semi-double to peony form.

2.50 3.50 6.00 7.50

SHIN AKEBONO—Pale pink. Large, single to semi-double.

4.00* 5.00* 7.50

SHIRO TAMA—White. Medium-large, rose form double.

2.50 3.50 6.00 7.50

SIERRA SPRING—Bright pink heavily mottled with white. Large, semi-double.

4.00* 5.00* 7.50* 10.00*

SMILING BEAUTY—Delicate pink. Medium-large, semi-double.

4.00* 5.00* 7.50*

S. PETER NYCE—New. A beautiful predominantly white sport of Nagasaki. Winner of Best Flower Award in So. California Camellia Society Show 1952.

7.50*

SPRING SONNET—New. Outstanding pale pink sport of Herme.

7.50*

SWEET DELIGHT—Rose-pink. Semi-double to peony form. Fragrant.

2.50 3.50 6.00 7.50

SWEETI VERA—Flesh pink mottled with white with deeper pink speckles. Large, peony form.

4.00* 5.00*

SWEET SIXTEEN—Pale pink. Large, irregular semi-double.

4.00* 5.00* 7.50*

EMPEROR
WILHELM



MAGNOLIAFLORA

Nuccio's Special Quantity Prices

12"-18" Size Plants:

PRICED AT	ANY 4	ANY 8	ANY 12
\$1.50.....	\$ 5.50.....	\$10.75.....	\$15.75.....
2.00.....	7.25.....	14.25.....	21.00.....
2.50.....	9.00.....	17.75.....	26.00.....
3.00.....	10.75.....	21.00.....	31.00.....
4.00.....	14.25.....	28.00.....	42.50.....
5.00.....	17.50.....	35.00.....	52.50.....

VARIETY	SIZES			
	12"-18"	18"-24"	24"-30"	30"-36"
ST. ANDRE —Brilliant red. Very large, semi-double to anemone form.	4.00*	5.00*	7.50*
TALLAHASSEE GIRL —Large, semi-double to loose peony form. Very soft pink.	4.00*	5.00*	7.50*
THELMA DALE —Silvery-pink. Large, semi-double to rose form double. (Sport of Mrs. Baldwin Wood.)	5.00*	6.00*	7.50*
TINSIE —Bright red outer guard petals with white peony center.	4.00*	5.00*
T. S. CLOWER, JR. —A beautiful new white, striped pink, large, rose form double.	6.00*
VASHTI —One of the best mid-season to late blooming camellias. Medium size, rose form to full double. White blotched and striped pink.	5.00*	6.00*	7.50*
VEDRINE (Ruby Glow)—Ruby-red. Large, semi-double to loose peony form.	2.50	3.50	6.00	7.50
VICTORY WHITE —White. Large, semi-double peony form.	2.50	3.50	6.00
VILLE DE NANTES VAR. Dark red blotched with white. Large, irregular semi-double with edges of petals fimbriated.	5.00*	6.00*	7.50*	10.00*
VIRGIN'S BLUSH —Blush white. Medium, semi-double to peony form.	4.00*	5.00*	7.50*	10.00*
WARD'S DAIKAGURA —Heavily mottled with white strain of Daikagura.	5.00*
WARRIOR (N #107)—A 4-4½ inch semi-double to full peony form, brilliant, dark red with golden stamens. Approximately 25 large, round, wavy guard petals with golden stamens and small petals intermixed in center of flower. Foliage, light green, medium size. An upright grower. Blooms early to mid-season.	4.00	5.00	7.50	10.00*
WHITE EMPRESS —White. Very large, irregular semi-double.	5.00*	6.00*	7.50*
WHITE GIANT —White. Very large, semi-double.	4.00*	5.00*
YOBEKI DORI —A very large semi-double white, flushed pale pink.	5.00*	6.00*
YOHEI HAKU —White to creamy white, often tinted blush pink. Large, loose double peony form. Extremely early bloomer.	3.00	4.00	6.50	8.50

* An asterisk after the prices denotes grafted plants

SASANQUA CAMELLIAS

In the past few years the Sasanqua has at last been gaining the added popularity it rightfully deserves. Its hardiness, early and profusion of bloom (September to January), small, dark evergreen foliage make it a valuable addition to our landscape. Sasanquas thrive in full sun or a partially shaded area and may be used as hedges, ground covers, vines or specimens. Care and culture of the Sasanqua is identical to that of the Japonica.

VARIETY	SIZES		
	12"-18"	18"-24"	24"-30"
BRILLIANCY —Bright rose-pink. Very compact. Single.	3.00	4.00
CHARMER —New. Single white, edge salmon pink. Large.	5.00*
CHOJI-GURUMA —Full anemone form, rose-pink with lighter pink petals. Upright growth. 30"-36"—\$10.00*	4.00*	5.00*	7.50*
CLEOPATRA —Rose-pink. Semi-double to peony type. Very compact.	4.00*
DAWN —Beautiful single to semi-double, ivory white with blush pink at the margins of petals. Upright and compact growth.	4.00*	5.00	6.00
FLORIBUNDA —Single white, edged lavender-pink. Vigorous, upright and compact.	3.00
GIN-NO-SAE —Small, creamy white, full anemone form. Spreading growth.	4.00*	5.00*
HANA JIMAN —Large single white, tipped with pink. Fluted petals. Vigorous, upright and compact. Illustrated on back cover.	4.00*	5.00*
HINODEGUMA —Large, single white with pink edge. Upright and compact.	4.00*	5.00*
HINODE-NO-UMI —New. Very beautiful. Large, flat single. Deep crimson. Profuse bloomer.	6.00*
HIODOSHI —Single crimson, beautifully marbled white. Compact, slow grower.	4.00*
HIRYO —Deep crimson-red. Double. Vigorous open growth.	4.00*
HIRYO-NISHIKI —Variegated white form of Hiryo.	4.00*
HUGH EVANS —Profuse bloomer. Single pink. Vigorous, upright and compact.	2.00	3.00
JEAN MAY —This outstanding new Sasanqua will soon become the favorite of all because of its glossy foliage and compact, upright habit of growth. Large, shell pink, double blossoms. Excellent. Illustrated on front cover.	6.00*
KOWGYOKU (Little Gem)—Small, full formal double, white with edge of petals slightly marked with pink.	4.00*
LAVENDER QUEEN —Large, single, lavender-pink.	4.00*	5.00*	7.50*
MAIDEN'S BLUSH —Single, delicate pink.	3.00
MOMOZONO NISHIKI —Single, pale pink, shading to rose-red border. Vigorous, upright growth.	4.00*
NARUMIGATA —Single white, shaded with pink. Very large. Compact.	4.00*	5.00*
NODAMI USHIRO —Large, deep pink, semi-double. Vigorous, compact growth.	4.00*	5.00*
OCEAN SPRINGS —A large single white with petals edged with crimson. Very beautiful.	5.00*
PAPAVER —Large, single, bell shaped. Soft pink. Slender, upright growth.	4.00*
ROSY MIST —Large, single, delicate soft pink. Spreading grower.	4.00*	5.00*	7.50*

VARIETY	SIZES		
	12"-18"	18"-24"	24"-30"
SETSUGEKKA —A large single to semi-double white with ruffled petals that are slightly marked with pink at edges.	4.00*
SHISHI GASHIRA —Double, bright rose-red. Slow, low and compact.	4.00*	5.00*
SHISHIFUKUJIN —Very large, clear, soft pink. Single to semi-double. Upright, compact growth.	4.00*
SHOWA-NO-SAKAE —Semi-double to peony. Soft pink. Slow, low and compact. 30"-36" size \$7.50.	2.50	3.50	6.00
SNOWFLAKE —Beautiful, flat, large-petaled single white, with large, deep green foliage.	4.00*
TAIMI-NISHIKI —Single, pale pink mottled white. Open, vigorous growth.	4.00*
VERISCOLOR —Single pink with white center and lavender edge. Upright, compact.	4.00*
WHITE DOVE —White, semi-double to loose peony form. Vigorous, spreading grower.	2.50	3.50	6.00
WHITE QUEEN —Large, single white with showy stamens.	4.00*	5.00*	7.50*
WILLOW LEAF —Single white, margined with pink. Upright, compact.	4.00*
YAE ARARE —Beautiful, large, single white with petals tipped pink. Vigorous, bushy, upright growth.	4.00*	5.00*	...

RETICULATA CAMELLIAS

The following Yunnan Province Reticulata camellias are being offered by our nursery for the first time. Their beautiful blooms and open, graceful habit of growth make them distinct and unsurpassed in the world of camellias. We are offering these beautiful camellias in one size only—12 to 18 inch, grafted plants on 4 year understock at \$15.00 each. Limited quantity.

BUTTERFLY—6 inch rose-pink blossoms, with large, wavy petals. Slender, open growth.

CHANGS TEMPLE—Extremely large, brilliant pink, variegated, semi-double. Wide, dark green foliage.

CHRYSANTHEMUM PETAL—Full double, imbricated, pink, about 4 inches in diameter, with each petal fluted. Medium foliage.

CORNELIAN—Very large, deep rose, heavily marbled with white, semi-double, with wavy petals, and small petaloids in center.

CRIMSON ROBE—Very large, semi-double, carmine red. Petals are crepe textured, wavy and crinkled. Large foliage.

LION HEAD—Very large, semi-double, deep red, with each petal heavily variegated white.

MOUTANCHA—A 5 to 7 inch formal double with wavy petals; bright pink with white veins.

NOBLE PEARL—A 6 inch semi-double flower, with large, beautifully textured petals, deep red.

OSMANTHUS LEAF—Medium size, rose-form, double of unusual orchid-pink color. Small foliage.

PAGODA—Light red flowers, similar in form to Purple Gown, but more double, though small in diameter.

PROFESSOR TSAI—Large, rose-pink, semi-double with loose petal arrangement.

PURPLE GOWN—A 5 to 7 inch formal to peony form, deep purple-red with white variegation. Beautiful.

SHOT SILK—Brilliant pink, semi-double flowers, with loose, wavy petals informally arranged.

TALI QUEEN—Deep pink, lightly variegated with white; 6 inches or more in diameter. Large heavily textured petals.

WILLOW WAND—Large, orchid-pink, formal double blossoms opening to semi-double, with wavy petals.



DONCKELARI



JOSHUA YOUTZ
(White Daikagura)



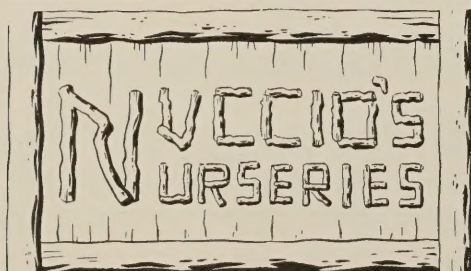
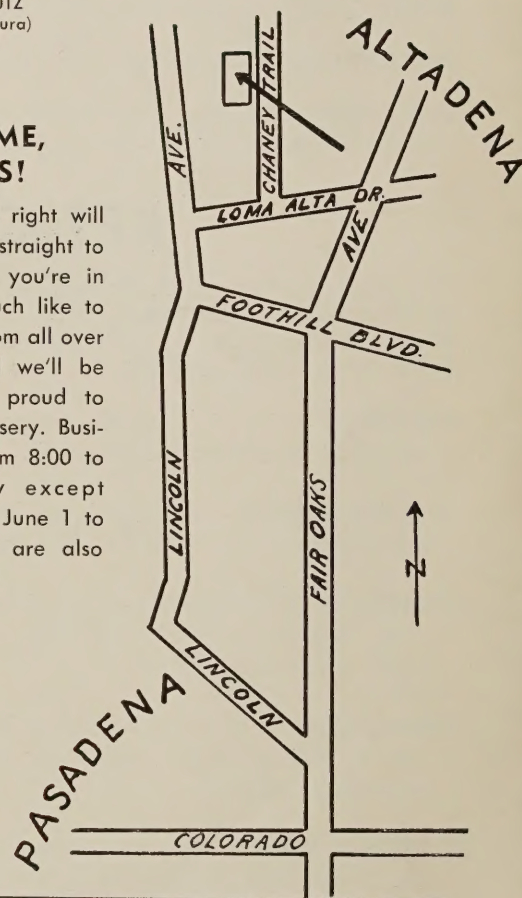
HANA JIMAN (Sasanqua)

SASANQUA CAMELLIAS

Our catalog this year reflects the very greatly increased interest in Sasanquas not only in the increased list of varieties but also in two new color plates, the Hana Jiman (above) and the phenomenal Jean May on the front cover.

WELCOME, FRIENDS!

The map at the right will help you to drive straight to our nursery when you're in town. We very much like to meet our friends from all over camellia-land, and we'll be most happy and proud to show you our nursery. Business hours are from 8:00 to 5:00 every day except Wednesday. From June 1 to September 15 we are also closed on Sundays.



3555 Chaney Trail, Altadena, California

POSTMASTER: Form 3547 Requested.

*Library
U. S. Dept of Agric.
Washington 25, D. C.*

